

HEALTHCHECKERS

SOCIAL VENTURES FOUNDATION

ROADMAP



STARLINK UPLOAD/ DOWNLOAD OPTION



HEALTHCHECKER MANAGER

HealthChecker Managers oversee HealthChecker training, operations and ensure all HealthCheckers in their assigned zones follow protocols, deliver quality care, and maintain system integrity.



HEALTHCHECKER SOCIAL FRANCHISEES



HEALTHCHECKER TASKS

FIRST CONTACT PATIENT RECORD INTAKE PALM RECOGNITION

All records are securely stored in the cloud with compatibility to ZL systems. Palm scan is the patient unique identifier number for quick and safe access utilizing a HealthChecker e smart phone installed app. Diagnostics will initially include eye test, hearing test, skin test and cardio/blood pressure. Additional tests are under development.

DIAGNOSTICS



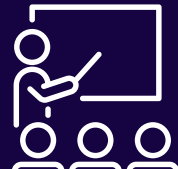
RED



YELLOW



GREEN



HOME

If **GREEN**, it means you're all clear and can return home.



EXISTING CLINIC OR HOSPITAL OR POP-UP CLINIC AT HOUSE

If **RED**, it means urgent attention is required.

The patient will be referred to (1) an existing clinic or an existing hospital for immediate care or further evaluation or (2) a pop-up clinic at a house due in response to a gang related event, a local health concern, or a request from the community. Palm opens patient record.

Patient referral will based on medical need, availability, and proximity to ensure efficient treatment.



PALM PRINT OPENS PATIENT RECORD ON MEDCHECK ME APP



GO BACK FOR FOLLOWUP CHECKUP WITH HEALTHCHECKER MANAGER

HealthChecker Manager will make bi-weekly motorcycle visits to each HealthChecker to provide supervision, conduct specialized follow-up tests and deliver appropriate supplies, including glasses and necessary meds. Possible referral to clinic or hospital may occur after follow-up visit.

GO BACK FOR FOLLOWUP CHECKUP WITH HEALTHCHECKER

If **YELLOW**, it means a follow-up is needed. A designated HealthChecker staff member will let you know when to return for your next checkup.. Possible referral to clinic or hospital may occur after followup visit.

